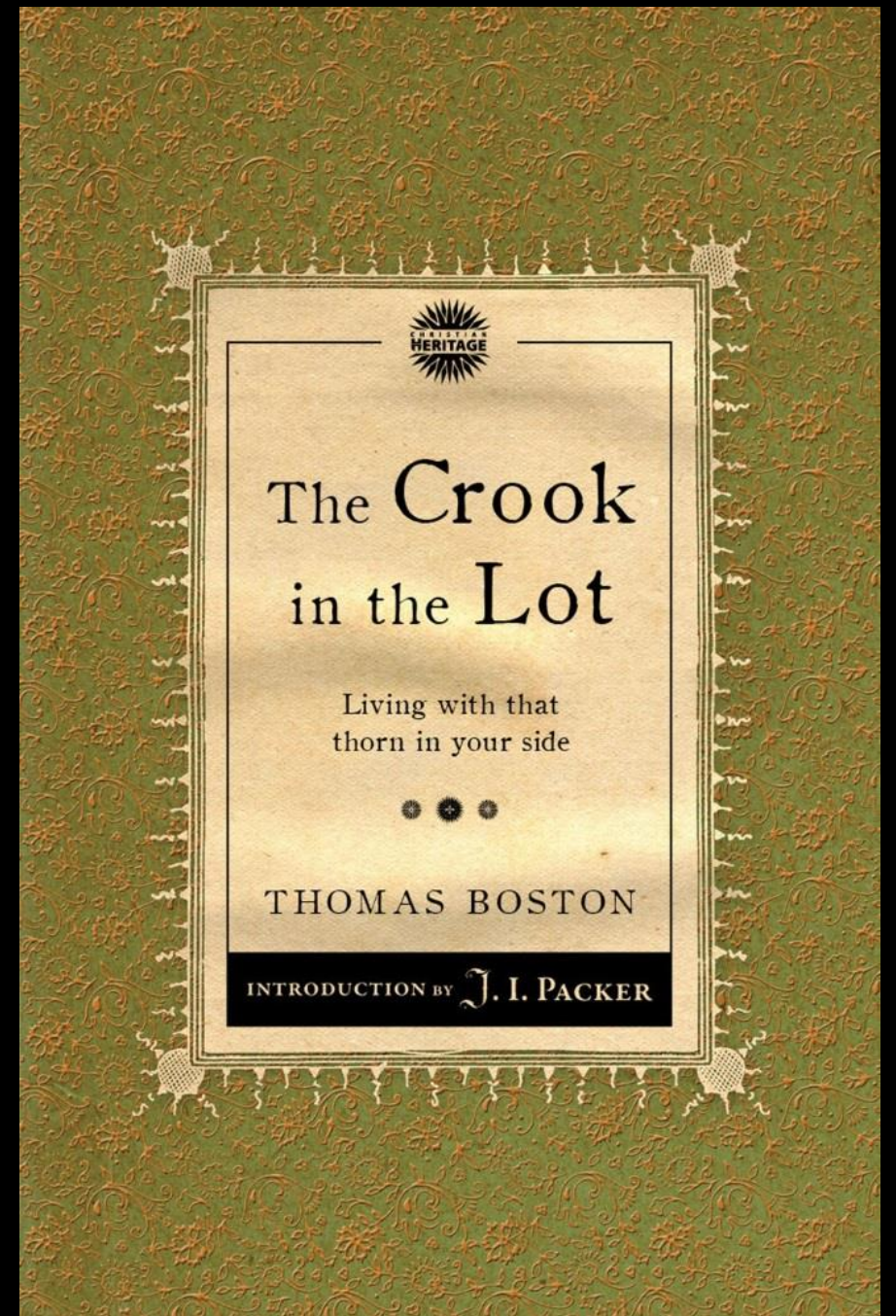
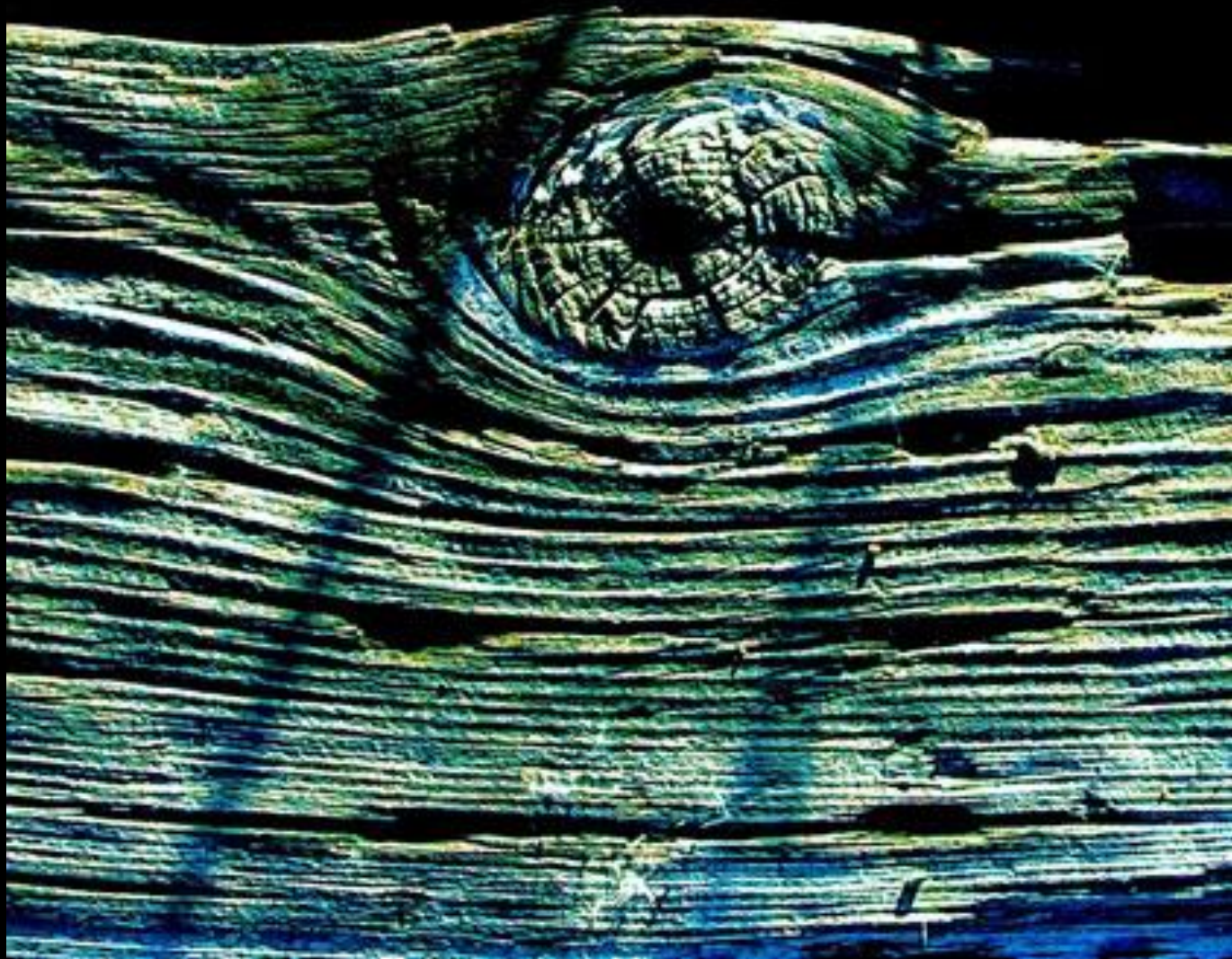


R. Scott sc.

THOMAS BOSTON,

*Late Minister of the Gospel at Etterick.*



# The Crook in the Lot

Living with that  
thorn in your side



THOMAS BOSTON

INTRODUCTION BY J. I. PACKER

The Works of  
THOMAS  
BOSTON

VOL-  
1

The Works of  
THOMAS  
BOSTON

VOL-  
2

The Works of  
THOMAS  
BOSTON

VOL-  
3

The Works of  
THOMAS  
BOSTON

VOL-  
4

The Works of  
THOMAS  
BOSTON

VOL-  
5

The Works of  
THOMAS  
BOSTON

VOL-  
6

The Works of  
THOMAS  
BOSTON

VOL-  
7

The Works of  
THOMAS  
BOSTON

VOL-  
8

The Works of  
THOMAS  
BOSTON

VOL-  
9

The Works of  
THOMAS  
BOSTON

VOL-  
10



# WELCOME TO ETRICK

## FORMATION OF THE LANDSCAPE

In geological terms, the Southern Uplands landscape around you consists mainly of Silurian deposits laid down from 400-500 million years ago and pushed up from the sea bed into an accretionary wedge by the collision of ancient continents. The majority of the rocks are weakly metamorphosed coarse greywacke, also known as whinstone.

These rocks were baked hard when they were buried and heated during this mountain-building process. However, over time, the high peaks were worn down by the ice age of 11-10,000 years ago, wind and water, creating the gentle undulations which are now evident. Ice deposited material on the ground beneath it, when its speed was reduced and where valleys widened. These are called 'moraines'.

In places, 'tremucy' moraine in the form of hundreds of hillocks was deposited on valley floors. On lower ground, it deposited sheets of material traditionally called 'boulder clay' as it often comprises stones and boulders in a fine-grained matrix (more technically called 'silt'). These deposits are perhaps the most significant of all because they are so widespread in the local upland valleys and provide the 'parent' material for many of our modern soils.



## THE PARISH OF ETRICK

A vast tract of Ettrick Forest was conveyed to the monks of Melrose Abbey by King Alexander II in 1255, taking in Cappercleuch, Tushielaw and the lands of the Terns and the Rankelburns. This was granted as free forest, no tree cutting or hunting without the permission of the Church, and all wool sold was free of export duty. Even though these lands were termed 'the wastelands of Selkirk' we have the impression that this was a time of prosperity when the Forest remained fairly intact and when farming did well. There was also a considerable population.

In the mid 16th century, after the Reformation, the New Kirk at Ettrick was established. Seemingly there was dearth of eligible ministers and it was a long time before the Valleys enjoyed the services of a preacher of the Reformed Faith. No doubt at that time people here all fell into lawless ways, both spiritually and politically.

The early years of the 18th century were a time of harsh religious discipline and meting harsh punishments. The Kirk was overseer not only of the spirit but also of law and order and it was the role of church elders to keep a watch on the parishioners and punish those failing to observe the rules of the Sabbath.

## ETTRICK WATER

Ettrick Water is one of the rivers that make up the River Tweed system, which is a major salmon river. It originates in the horseshoe of hills that get its name from Ettrick Head, the predominant feature which forms the head of the Ettrick Valley, some 7 miles or so from this spot. It runs through Ettrickbridge and on to about 5 miles past Selkirk where it joins the Tweed. It is a major salmon and sea trout spawning river.

In the river and burns brown trout, salmon, lamprey, stickleback, minnow, stone loach and eel can be found feeding on the abundant invertebrates living in the fresh water.

It is one of the fastest flowing rivers in Scotland, second only to the Spey. The source rises at Capel Fell, approximately 678 metres above sea level, and runs for 28 miles to its confluence with the Tweed at Sunderland Hall, 100 metres above sea level.



## JAMES HOGG (1770-1835)

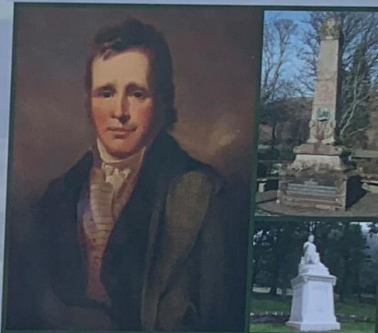
He was born just 200 or so metres from here in a cottage at Ettrickhouse Farm. The cottage no longer stands but the spot is marked. His father was a pious tenant farmer in the by then treeline forest between two rivers, the Ettrick and the Yarrow. James used the family Bible to teach himself to read. An early interest in literature was no doubt fostered by his mother who recited in the Scottish oral tradition, ballads, songs and Faerie tales. His mother's father was Will O'Phaup, a shepherd whose feats of physical prowess were equalled by his visitations from Faeries, the last sighting of which was at Lochy Law, just a few miles up the valley past Shorthope.

He wrote his poems and novels in both Scots and English. As a young man he worked locally as a shepherd and farmhand, and was largely self-educated through reading. He was a friend of many of the great writers of his day, including Sir Walter Scott, whom he later wrote an unauthorized biography of. He became widely known as the 'Ettrick Shepherd', a nickname under which some of his works were published. He is best known today for his novel 'The Private Memoirs and Confessions of a Justified Sinner'.

In 1810 Hogg moved to Edinburgh and subsequently made his reputation as a poet with his collection 'The Queen's Wake' published in 1815. In 1815 the Duke of Buccleuch died and bequeathed Hogg a farm at Alltrive Lake in Yarrow. He lived here until the end of his life, farming and writing.

Hogg frequently visited the Gordon Arms and Tibbie Sheik's Inn in the Yarrow Valley meeting with fellow writers including Scott and De Quincey. A monument to Hogg was erected by St Mary's Loch, close to Tibbie Sheik's Inn.

James Hogg is buried in Ettrick Churchyard.



## THOMAS BOSTON (1676-1732)

Born in Duns in 1676, he was the son of a fervently covenanting father who had suffered imprisonment for his beliefs. He had an extraordinary reputation for his powers and ability as a preacher of Scottish Covenanting Calvinism, a stern and often cruel creed. Boston was regarded with admiration and terror far beyond the confines of the Parish.

The people in Ettrick were reported to be a contentious lot, many openly hostile to the complicated politics of Kirk and State. And difficult troubled years followed when Boston stuck to his principles against personal attack and non attendance. He decided to write his sermons and by the time they were published to great acclaim as 'The Fourfold State' in 1723 Boston's stance on spiritual and political thinking was as strong as ever. When the local population got wind of this they realised the value of the man they had long tried to get rid of.

Before he died, one summer communion filled him with great joy as 800 people flocked to hear him from far and wide. He has been immortalised in the valley thereafter for his indomitable spirit. Too feeble to stand he would preach sitting down. Unable to walk to the Kirk he would preach from the bedroom window to the congregation standing outside. He was succeeded even before his death by his son, also Thomas. To quote Craig Brown's History, "All pervading piety was his characteristic, constancy in his faith and belief in the Almighty as a close incessant superior in every act and fact of life."

His reputation was immense. It is said that nearly every cottage in Scotland had a copy of the Fourfold State. Today we remember Thomas Boston from his gravestone in the local Kirkyard, from the naming of our local community hall. Today many others from much wider afield have a closer regard.



## WILLIAM JOHNSTONE (1897-1981)

William Johnstone, painter, was born in Denholm the son of a Borders farmer. His youth was spent at Crookholm Farm, near Selkirk. When he was a teenager he had been encouraged by Tom Scott, the superb watercolour painter and master of the Borders landscape who happened to paint the farm.

After service in the army during World War I he attended Edinburgh College of Art in 1919. He moved to London in 1931. The first years were hard and he had little time to paint. He then held various posts until in 1938 he was appointed head of Camberwell school of Art. This was a remarkable achievement for a man brought up in the farming tradition of the Scottish Borders whose early school education was sparse.

In 1960 he bought a farm near Lilliesleaf and returned to take up sheep farming. Moving several times to various farms in the ensuing 20 years until his death he managed to combine farming life with painting. Painting on increasingly large scale canvases some say he produced his best work at this time.

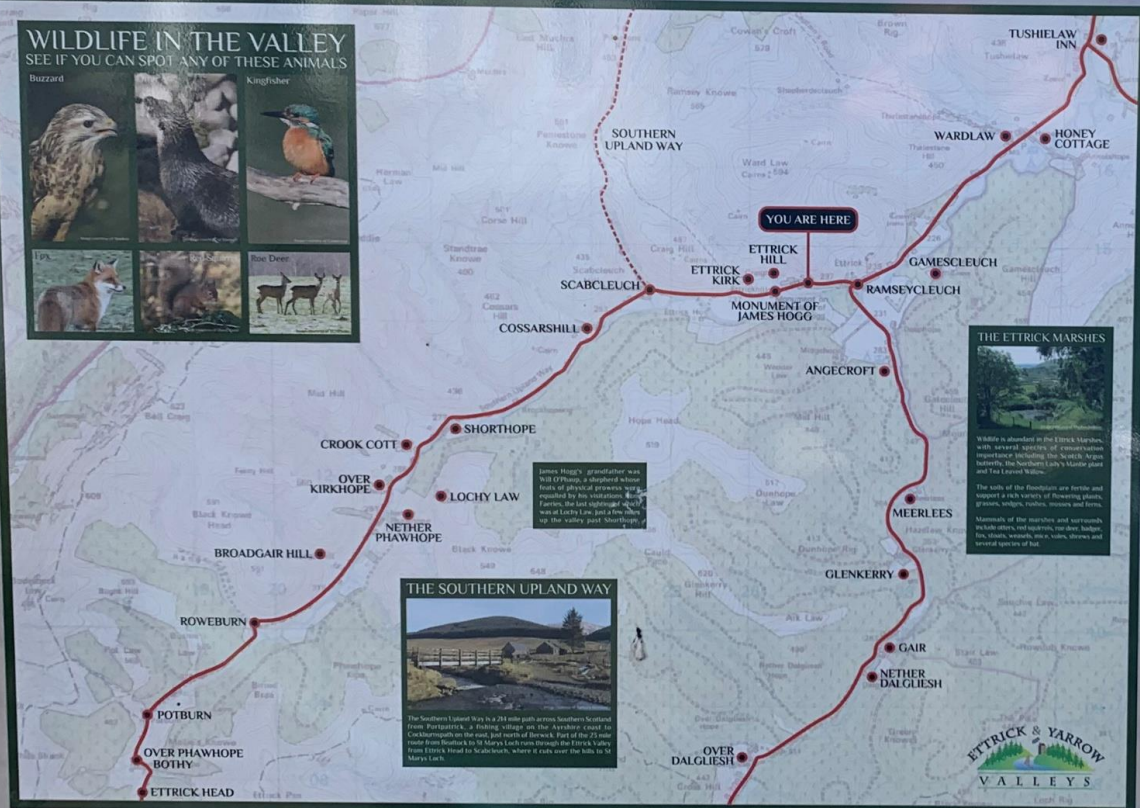
In 1980 he was awarded an Honorary Doctorate from Edinburgh University and published his autobiography 'Points in Time'. He died at his Crailling home in 1981 and is buried in Denholm.

He lived in Potburn, at the head of this valley, from 1965 to 1970.



## WILDLIFE IN THE VALLEY

SEE IF YOU CAN SPOT ANY OF THESE ANIMALS



### THE ETRICK MARSHES

Wildlife is abundant in the Ettrick Marshes, with several species of conservation importance including the Scotch Wren, the Newburn Lark, the Mistle Thrush and the Fieldfare.

The soils of the Ettrick marshes are fertile and support a rich variety of flowering plants, grasses, sedges, rushes, mosses and ferns.

Mammals of the marshes and surrounding hillsides include otters, red squirrels, marten, badger, the stoat, weasels, mice, shrews, stoats and several species of bat.

### THE SOUTHERN UPLAND WAY

The Southern Upland Way is a 281 mile path across Southern Scotland from Perth to Kirkcaldy, a walking holiday on the Ancient coast to the Coast through the hills and valleys of the Ettrick. Part of the 23 mile stretch from Ettrick to St Mary's Loch runs through the Ettrick Valley from Ettrick Head to Scabcleuch, where it runs over the hills in St Mary's Loch.



















**I exhort the elders among you, as *your* fellow elder. . . shepherd the flock of God among you, exercising oversight not under compulsion, but voluntarily, according to *the will of God*, and not for sordid gain, but with eagerness; nor yet as lording it over those allotted to your charge, but proving to be examples to the flock (I Peter 5:1-3).**

**Obey your leaders and submit *to them*, for they keep watch over your souls as those who will give an account. Let them do this with joy and not with grief for this would be unprofitable for you (Hebrews 13:17).**