



**WHAT IS THE TRUE  
CHRISTIAN'S  
RELATION  
TO THE WORLD?**



WHAT IS THE WORLD  
(according to the New  
Testament)?



WHAT IS THE WORLD  
(according to the New  
Testament)?






WHAT IS THE WORLD  
(according to the New  
Testament)?





WHAT IS THE WORLD  
(according to the New  
Testament)?



THE LUST OF THE FLESH

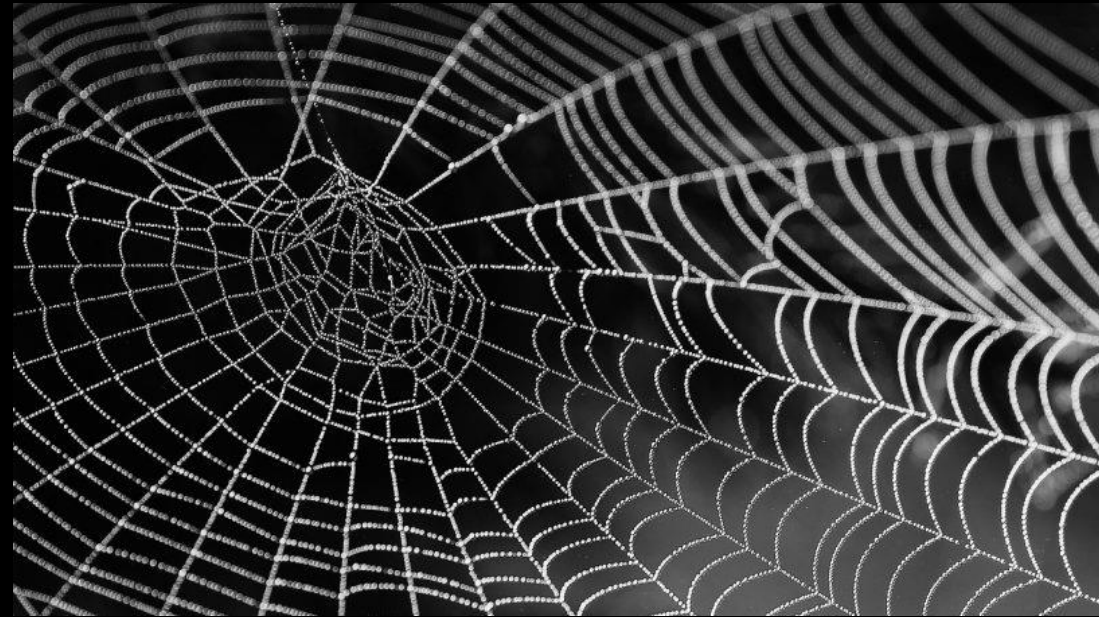
**1 John 2:16**



pride of life



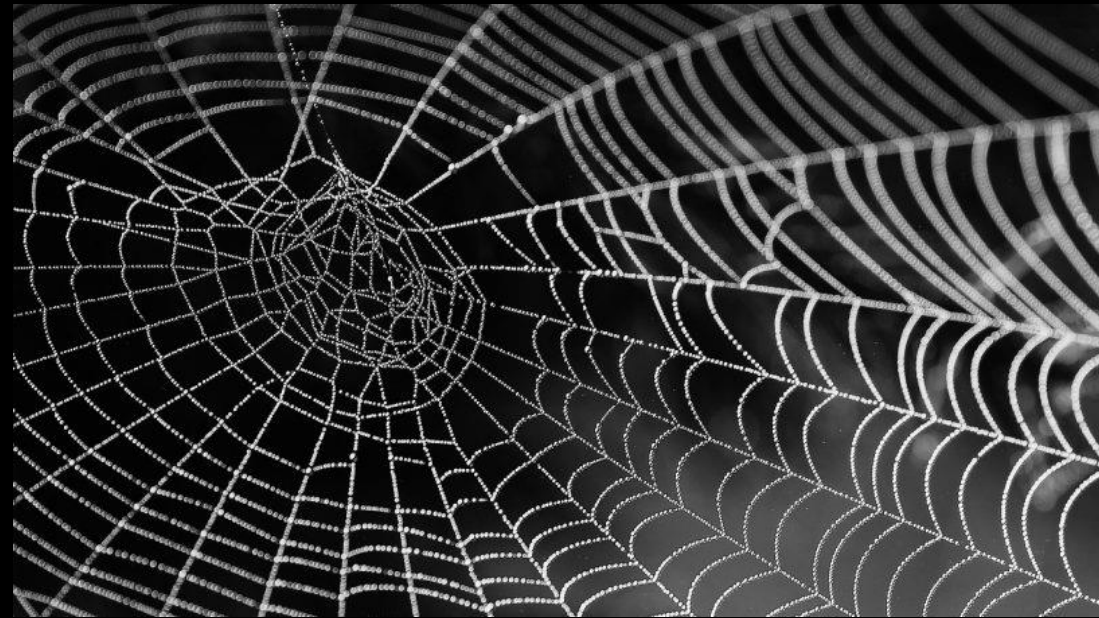
WHAT IS THE WORLD  
(according to the New  
Testament)?



**II Peter 2:20**



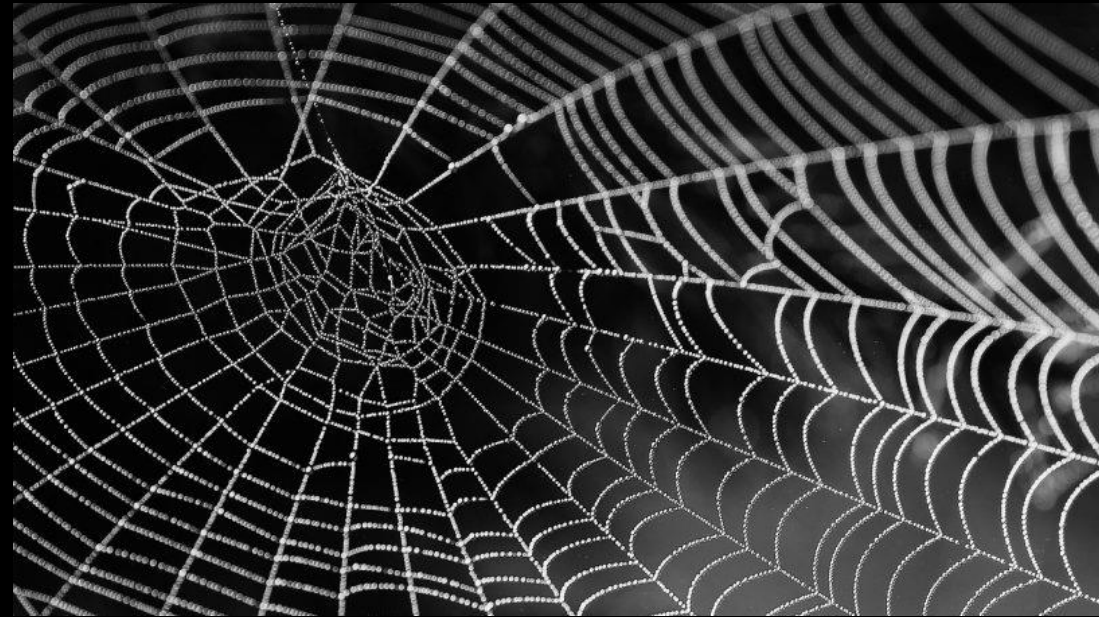
WHAT IS THE WORLD  
(according to the New  
Testament)?



**I John 5:19**



WHAT IS THE WORLD  
(according to the New  
Testament)?



**I John 5:19**  
**John 8:44**





# WHAT IS THE TRUE CHRISTIAN'S RELATION TO THE WORLD?

**John 17:6, 14/16, 18**

*given out of  
not of  
sent into*

**We are *out of* because God the Father gave us. . .**

**We are *out of***

**because God the Father gave . . .**

**We are *not of***

**because God the Holy Spirit begot us. . .**

***We are out of***      **because God the Father**      **gave . . .**

***We are not of***      **because God the Holy Spirit begot. . .**

***We are sent into***      **because God the Son commissions . . .**

**We are GIVEN**

**We are BEGOTTEN**

**We are COMMISSIONED**

**We are COMMISSIONED**

**We are COMMISSIONED**

*As you sent Me into the world, I also have sent them  
into the world (John 17:18).*

**We are COMMISSIONED**

*As you sent Me into the world, I also have sent them into the world (John 17:18).*

**1 Our Mission (Matthew 28:18-20).**



# We are COMMISSIONED

*As you sent Me into the world, I also have sent them into the world (John 17:18).*

1 Our Mission (Matthew 28:18-20).

**2 Our Function (Matthew 5:14).**

# We are COMMISSIONED

*As you sent Me into the world, I also have sent them into the world (John 17:18).*

1 Our Mission (Matthew 28:18-20).

2 Our Function (Matthew 5:14).

**3 Our Condition (John 17:19; Romans 12:2).**

# We are COMMISSIONED

*As you sent Me into the world, I also have sent them into the world (John 17:18).*

1 Our Mission (Matthew 28:18-20).

2 Our Function (Matthew 5:14).

3 Our Condition (John 17:19; Romans 12:2).

**4 The World's Reactions (John 15:18-19; 17:14; I John 3:1, 13; 4:5).**

# We are COMMISSIONED

*As you sent Me into the world, I also have sent them into the world (John 17:18).*

1 Our Mission (Matthew 28:18-20).

**2 Our Function (Matthew 5:14).**

*Functioning in the World as its Light*

Matthew 5:14-16

*Functioning in the World as its Light*

Matthew 5:14-16

**I. Our Lord Is Describing Our Function Metaphorically.**

*Functioning in the World as its Light*

Matthew 5:14-16

- I. Our Lord Is Describing Our Function Metaphorically.**
  - A. He implies that the world is darkness.**

*Functioning in the World as its Light*

Matthew 5:14-16

- I. Our Lord Is Describing Our Function Metaphorically.**
  - A. He implies that the world is darkness.**
  - B. He calls us to dispel the darkness.**



# *Functioning in the World as its Light*

Matthew 5:14-16

- I. Our Lord Is Describing Our Function Metaphorically.**
  - A. He implies that the world is darkness.**
  - B. He calls us to dispel the darkness.**

**This is light's unique power. Nothing else is capable of doing this.**

*Functioning in the World as its Light*

Matthew 5:14-16

- I. Our Lord Is Describing Our Function Metaphorically.**
  - A. He implies that the world is darkness.**
  - B. He calls us to dispel darkness.**

**No other metaphor could so accurately convey the power of our being categorically distinctive.**

*Functioning in the World as its Light*

Matthew 5:14-16

- I. Our Lord Is Describing Our Function Metaphorically.**
  - A. He implies that the world is darkness.**
  - B. He calls us to dispel darkness.**
  
- II. Our Lord Is Sending Us To Function As He Did.**

