

A wide-angle photograph of a deep canyon at sunset. The sun is low on the horizon, casting a warm, golden glow across the sky and the canyon walls. The sky is filled with soft, wispy clouds. The canyon walls are rugged and layered, showing signs of geological erosion. The overall mood is serene and majestic.

JUST AS IT WAS FROM
THE BEGINNING?





KAIBAB INDIAN RESERVATION
PIPE SPRING NATIONAL MONUMENT

Fredonia
Page
VERMILION CLIFFS NATIONAL MONUMENT
Jacob Lake

GRAND CANYON NATIONAL PARK

To Tonopah
Las Vegas

To Barstow

NEVADA CALIFORNIA

MOJAVE

Unpaved roads are impassable when wet

Road closed in winter

GRAND CANYON-PARASHANT NATIONAL MONUMENT

NAVAJO INDIAN RESERVATION

Henderson
Boulder City

LAKE MEAD NATIONAL RECREATION AREA

Pearce Ferry
Grand Canyon Skywalk
Meadview

Colorado River

HAVASUPAI INDIAN RESERVATION

Grand Canyon Village

North Rim

Desert View

Tusayan

Cameron

HUALAPAI INDIAN RESERVATION

Hackberry

Peach Springs

Seligman

Valle

WUPATKI NATIONAL MONUMENT

SUNSET CRATER VOLCANO NATIONAL MONUMENT

Williams

Ash Fork

Flagstaff

WALNUT CANYON

93

168

15

169

169

95

95

163

93

68

NE ARIZONA

389

ALT 89

67

160

64

64

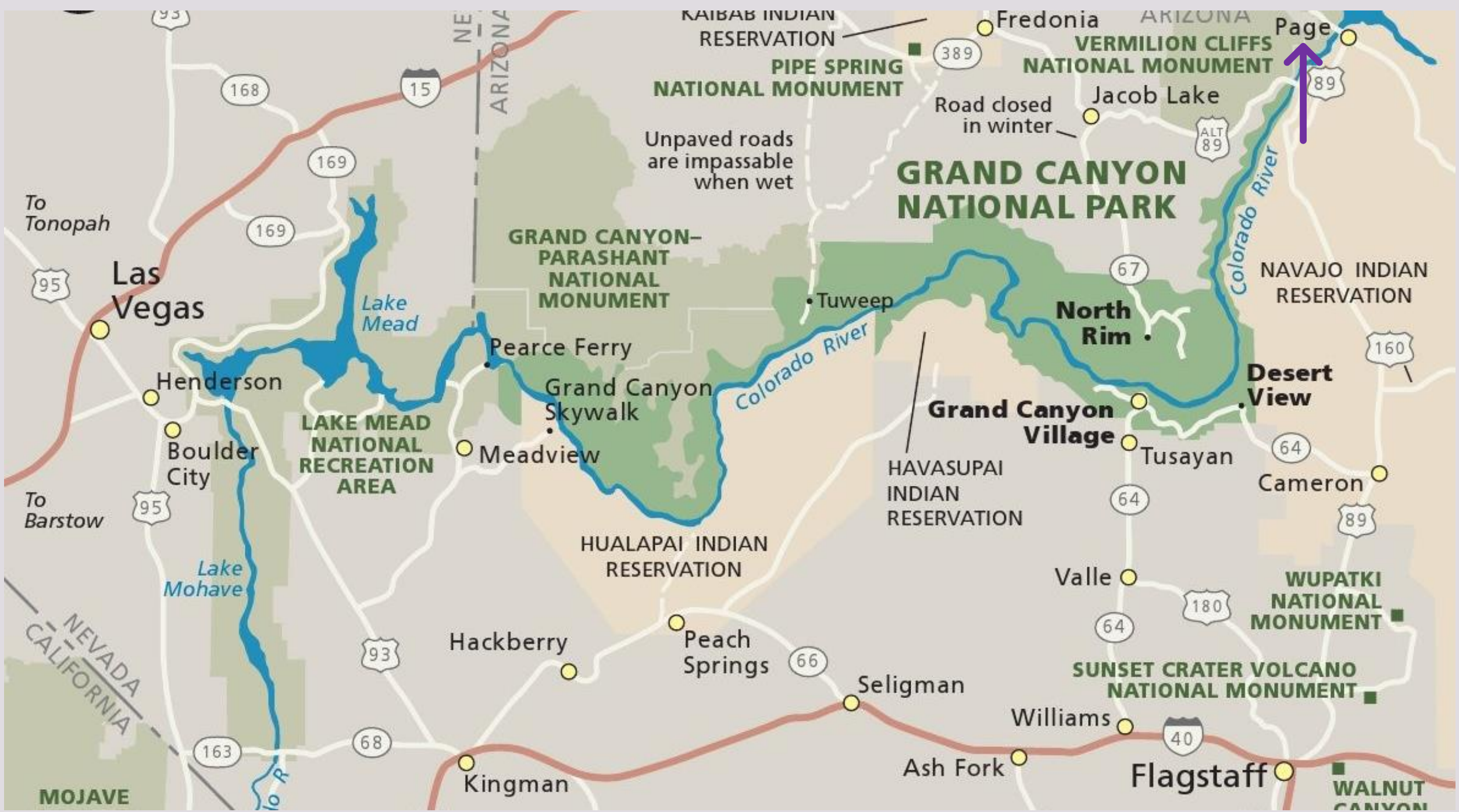
89

64

180

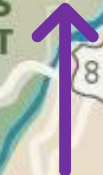
66

40



Unpaved roads are impassable when wet

Road closed in winter



To Tonopah

To Barstow

NEVADA
CALIFORNIA

MOJAVE

Las Vegas

Henderson

Boulder City

Lake Mohave

LAKE MEAD
NATIONAL
RECREATION
AREA

GRAND CANYON-
PARASHANT
NATIONAL
MONUMENT

Pearce Ferry

Grand Canyon
Skywalk

Meadview

HUALAPAI INDIAN
RESERVATION

Hackberry

Peach
Springs

Kingman

KAIBAB INDIAN
RESERVATION

PIPE SPRING
NATIONAL MONUMENT

Fredonia

389

Road closed in winter

Jacob Lake

ALT
89

GRAND CANYON
NATIONAL PARK

Tuweep

North
Rim

NAVAJO INDIAN
RESERVATION

Desert
View

Grand Canyon
Village

Tusayan

HAVASUPAI
INDIAN
RESERVATION

Cameron

Valle

WUPATKI
NATIONAL
MONUMENT

SUNSET CRATER VOLCANO
NATIONAL MONUMENT

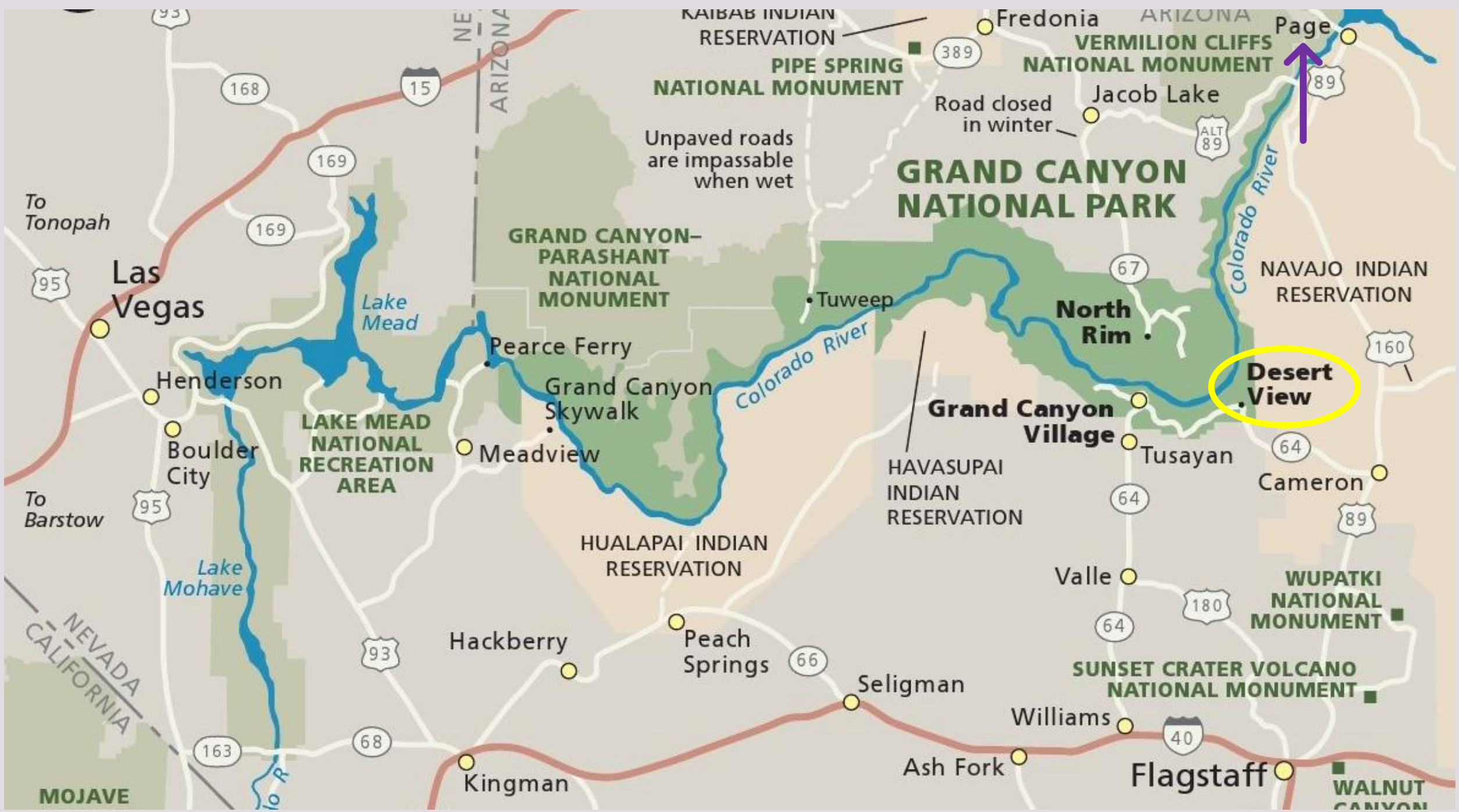
Seligman

Williams

Ash Fork

Flagstaff

WALNUT
CANYON



Desert View

Page

GRAND CANYON NATIONAL PARK

North Rim

Grand Canyon Village

Las Vegas

LAKE MEAD NATIONAL RECREATION AREA

Unpaved roads are impassable when wet

Road closed in winter

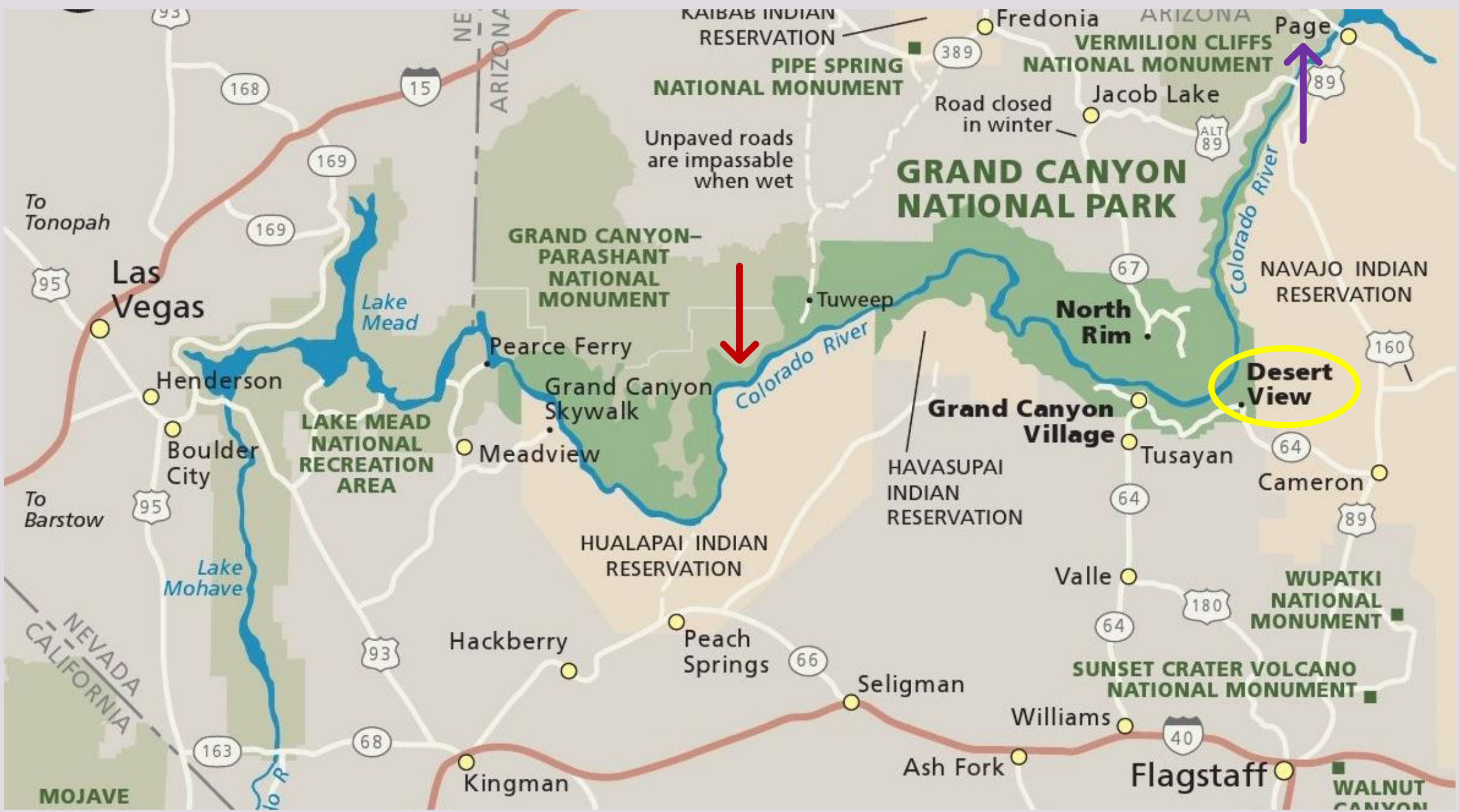
To Tonopah

To Barstow

NEVADA CALIFORNIA

MOJAVE

WALNUT CANYON



Unpaved roads are impassable when wet

Road closed in winter

Desert View

To Tonopah

To Barstow

NEVADA
CALIFORNIA

MOJAVE

KAIBAB INDIAN RESERVATION

PIPE SPRING NATIONAL MONUMENT

VERMILION CLIFFS NATIONAL MONUMENT

GRAND CANYON-PARASHANT NATIONAL MONUMENT

GRAND CANYON NATIONAL PARK

NAVAJO INDIAN RESERVATION

LAKE MEAD NATIONAL RECREATION AREA

Grand Canyon Village

HAVASUPAI INDIAN RESERVATION

HUALAPAI INDIAN RESERVATION

WUPATKI NATIONAL MONUMENT

SUNSET CRATER VOLCANO NATIONAL MONUMENT

WALNUT CANYON

93

168

15

169

169

95

95

163

93

68

NE
ARIZONA

389

89

67

160

64

89

64

64

180

66

40



MARBLE CANYON

LODGE
MARBLE CANYON ARIZONA

MOTEL
Registration

101-108 < 109-116













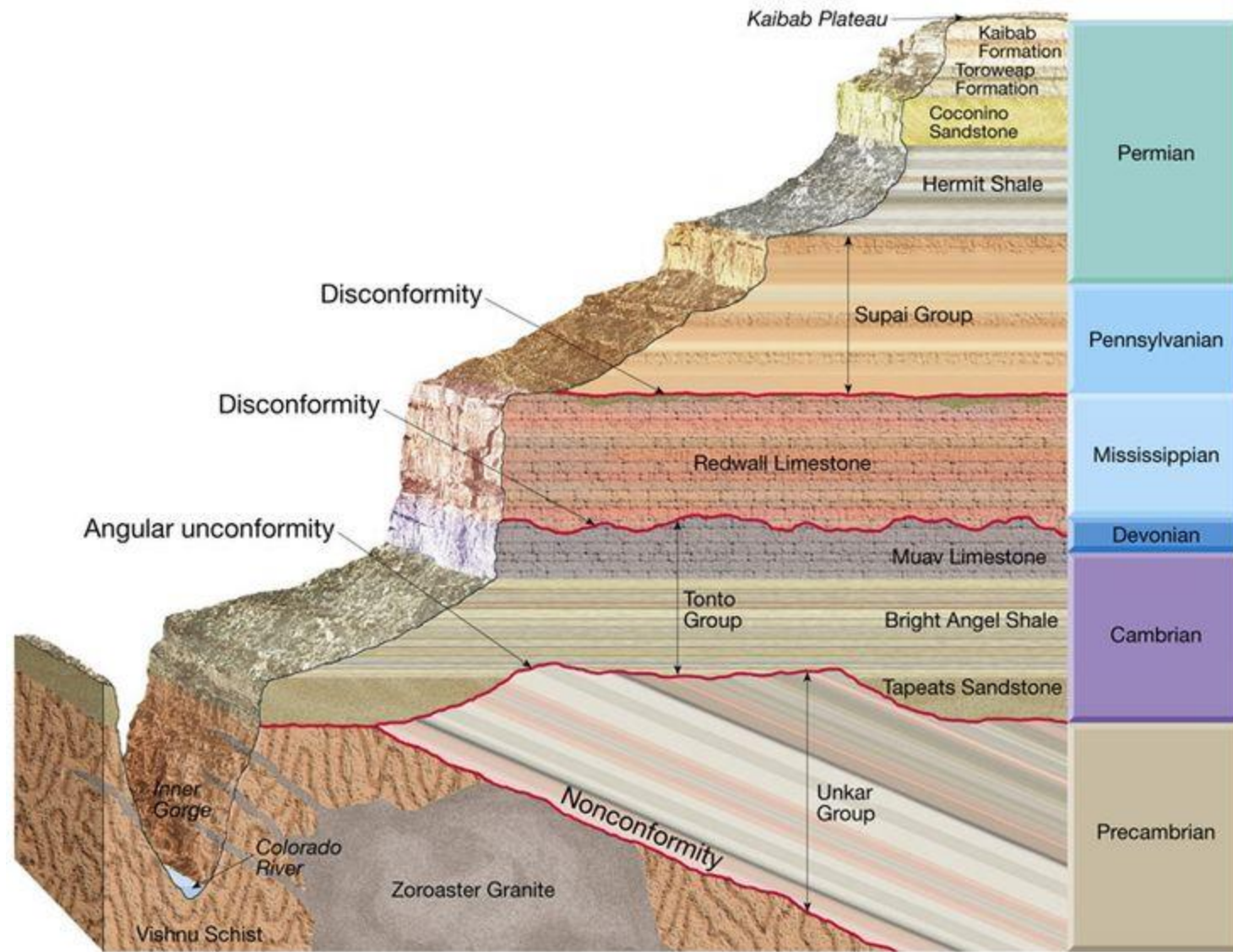






















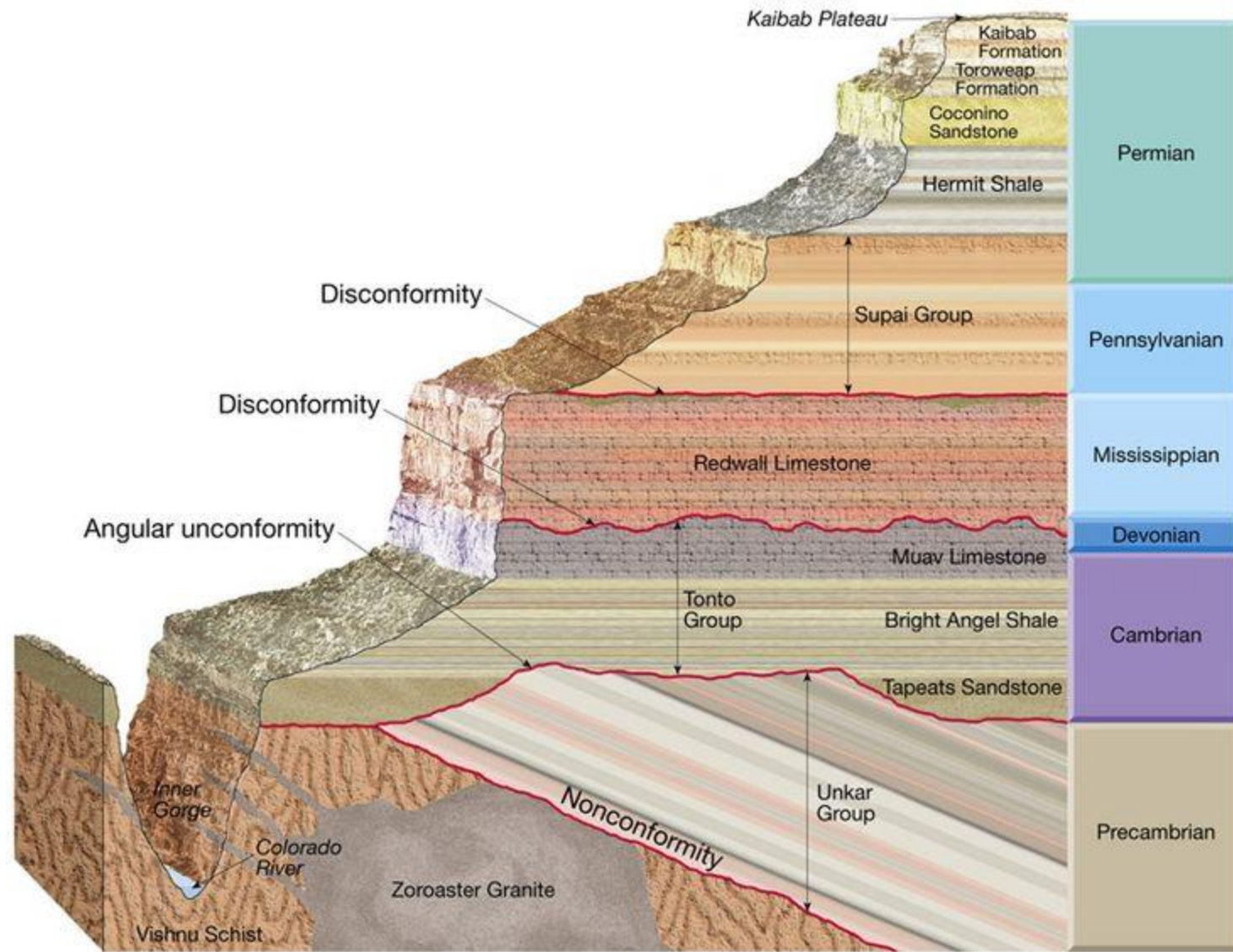


















JUST AS IT WAS FROM
THE BEGINNING?